

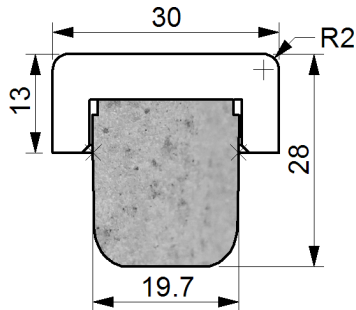
SNTW28195/1330B

T NATURE diameter 19,7 wooden top 13x30 BLACK VARNISHED

Date 09-02-16 Print 09-02-16

Format A4 - Drawing 2014

SPECIFICATIONS



Scale 1:1

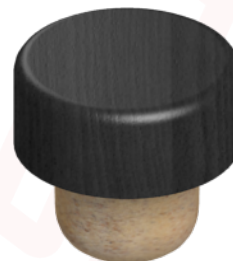
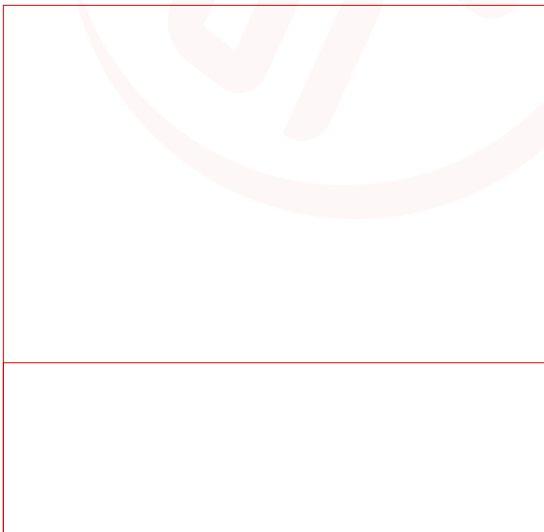
Dimensional Tolerancies $\pm 0,3$ mm

Top Part	Wooden Top BLACK varnished color
Body Part	Foamed Blend of thermoplastic material
Color	Nature
Weight gr.	7,80 + / - 0,5
Assembled	Glued
Box pcs.	800 x 2

SUPERCAP DECLARES that all items are comply with current CE and FDA legislations governing products intended for food contact. For more details please see our Declaration of Conformity.
Supercap Srl can't guarantee performances of its products for any other use not previously agreed with its technical office.

Beverage declared by Customer:

Customization



Computer graphic, image: colors may appear different from real product colors



Supercap S.r.l. - Via Cairo, 83
61024 Mombaroccio - Pesaro - Italia
Tel. +39 0721 470507 - Fax +39 0721 471243
info@supercap.it - www.supercap.it

This specification is property of Supercap S.r.l.. It must not be copied or disclosed in any form unless under written permission received by Supercap S.r.l.
Supercap S.r.l. reserves the right to modify the content of this document without giving any notice.